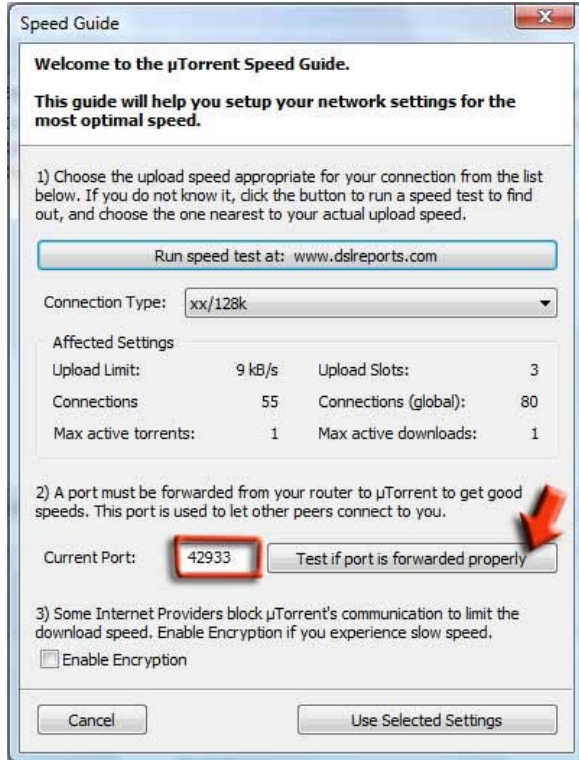


How to forward a port on Fritz!Box (sample µTorrent)

- 1 Download [µTorrent](#)
- 2 After downloading and installing µTorrent this screen will pop up.



Otherwise you can find this Menu at 'Options -> Speed Guide'. In this example we open the port **42933**. If you click on 'Test if port is forwarded properly' you will probably see that your port is not forwarded correctly.

- 3 Open the 'Fritz!Box Menu -> Internet -> Port forwarding -> New Port forwarding'



- 4 Enter the settings accordingly to the screenshot and click 'Apply'

Port Forwarding

Port forwarding enabled for Other applications **select**

Name **enter** → uTorrent

Protocol TCP

From port **enter** → 42933 through port

To IP address 192.168.178.21

To port **enter** → 42933

Apply Cancel Help

- 5 Open µTorrent again and click on 'Options -> Speed Guide'

2) A port must be forwarded from your router to µTorrent to get good speeds. This port is used to let other peers connect to you.

Current Port: 42933 Test if port is forwarded properly

3) Some Internet Providers block µTorrent's communication to limit the download speed. Enable Encryption if you experience slow speed.

Enable Encryption

Cancel Use Selected Settings

If you click on 'Test if port is forwarded properly' your browser window will open and you should see **OK!**

µTorrent Port Checker - Mozilla Firefox

File Edit View History Bookmarks Tools Help

Back Forward Reload Stop Home Secure Login <http://www.utorrent.com:16000/testport2.php?port=42933>

Getting Started Latest Headlines Meistbesuchte Seiten Intelligente Lesezeichen Erste Schritte Aktuelle Nachrichten

Google Search Search Site Search News Bookmarks PageRank

Welcome to the µTorrent Port Checker.
A test will be performed on your computer to check if the specified port is opened.

Checking port 42933 on your IP address

OK! Port 42933 is open and accepting connections.
You will be able to receive incoming BitTorrent connections.